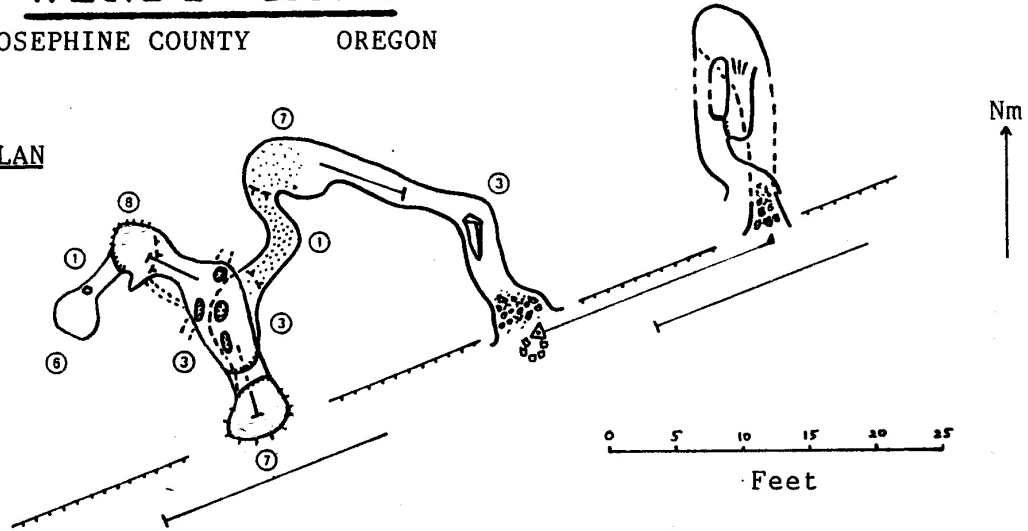


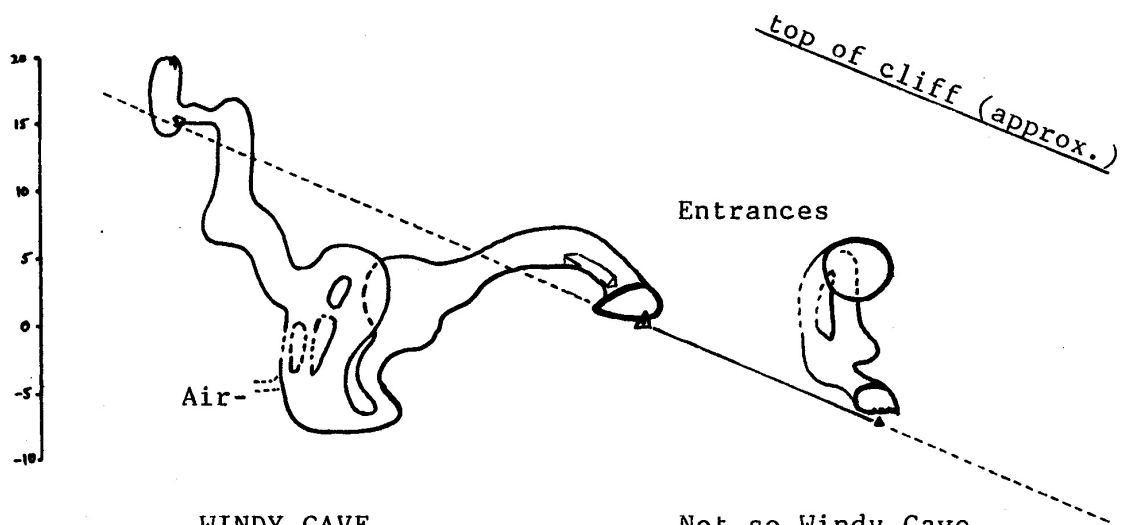
WINDY CAVE

JOSEPHINE COUNTY OREGON

PLAN



PROFILE



WINDY CAVE

Length 88.8 ft
Depth 24.8 ft

Not so Windy Cave

Length 34.5 ft
Depth 12.6 ft

Instrument & Tape Survey - July 21, 1996

B. Broeckel
B. Kenney
C. Kenney

T. Kline
R. Nixon
P. Showalter

Map

B. Broeckel

The SAG RAG is published by the Shasta Area Grotto of the National Speleological Society, Grotto meetings are held at different locations the fourth Friday of each month at 7:30 p.m. Meeting locations are announced in the SAG RAG, Membership dues are \$6 dollars per year and include newsletter subscription. Original material not otherwise noted is copyright to the SAG RAG. Such material may be copied with credit given to the author and the SAG RAG. For use outside of the caving community, please seek the permission of the author or editor first. Send material for publication any time to Bighorn Broeckel, 2916 Deer Meadows Road, Yreka, CA 96097. Material intended for the next newsletter is due by the 10th of the even month.

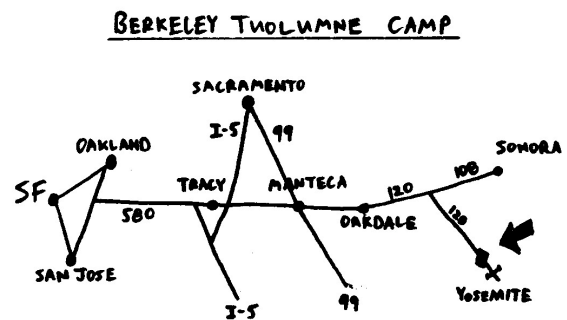
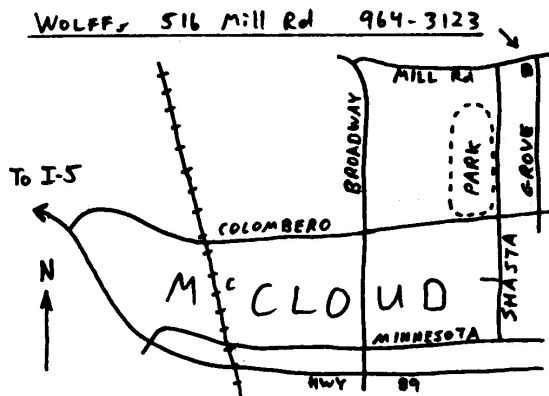
EDITORIAL: Local cavers will be glad to hear that we got a car and I won't have to bum rides quite as much. Thanks to all those who allowed me to jump in their cars on cave trips. Another poem came in from biologist Francis Mangels. He wants to go caving in order to see critters. Call him through Shasta-Trinity Nat. Forest if the crawlways are not too long. The Arizona news clippings came in with the poem. This would be a good issue to share with others. Best wishes to all those making the convention trip out to Colorado. This month's meeting is postponed to the 3rd Friday to accommodate the convention. Also check out the Regional opportunities in September, looking as good as ever. Don't forget to go caving

BB

CALENDAR

August 16	SAG meeting at Wolff's in McCloud, 7:30 PM.
August 30	Labor Day KMCTF Speleocamp.
August 30	Northwest Caving Association Regional, Ely, NV.
September 3	SOG meeting at Bruno's Pizza, Medford, 7:00 PM.
September 13	SAG meeting at Wolff's in McCloud, 7:30 PM.
September 20	Western Regional at Berkeley Tuolumne Camp.
October 11	Columbus Day KMCTF Speleocamp.

MAPS



SHASTA AREA GROTTO MEETING**June 14, 1996**

The meeting was called to order at 7:46 PM. at the Wolff home in McCloud.

Present were: Neils Smith, Bill & Cheryl Kenney, Melanie Jackson, Jim & Liz Wolff, Ray Miller, Robert Nixon, and guests Bob & Tamara Steelman of Montague.

Minutes: The April minutes were approved as read. There was no meeting in May.

Treasurer's Report: The April Balance was \$561.90. The June Balance is \$519.26. Income was \$42.00 and expenses were \$84.64.

Correspondence: Received a letter from the Diablo Grotto with a change of address and a request for back issues of the SAG RAG. Received from Madrid, Spain, a brochure on a two volume book set called Grandes Travesias with info. on 40 caves.

Old Business: We have 4 caves on our Register Program: Bat Cave, 3 Level Ice Cave, Jot Dean Cave, and Road Side Complex. 2 registers need replacing.

BAT CAVE – on Aug. 9th the Forest Service has scheduled an evening meeting in Mt. Shasta regarding the gating of Bat Cave. Since most people who would need to attend the meeting will be at the NSS Convention in CO, a request will be put in to change the date to a better time for SAG to send member representation. Ray Miller is to see what time would be good for Bill Broeckel to attend. Recently it was noted that 6 people had been in Bat Cave and that it was also very wet. No bats were seen.

New Business: Steve Dagitz will be attending the NCRC Session in Arkansas along with one more person from Siskiyou County. The Klamath Nat'l Forest Keeper of Caves wants to attend a SAG meeting. He is aware of the work that Ray Miller and Liz Wolff have been doing regarding the bats in the Scott River Mines. He may possibly be able to help with our getting to and into Jack Jones Cave. The Dept. of Fish and Game is working on a data base for endangered species. Regarding the Townsend Bats they want to know the location to the nearest meter of caves that these bats use. This information is only for use by the researchers, but it will be public domain info. Ray suggested we only give them the quarter of the township (a 9 square mile area) that the caves are located in. The grotto prefers not to give them the exact location because the bats are located in several caves. Ray Miller made a motion that the cavers think about how much information, if any, we want of release to the F&G Dept. regarding the locations of the bats and take a vote at the July meeting. Do we want to report Bat sightings and if so, what resolution (how close) do we want to give?

Future Meetings: July 12th the McCoy Reservoir – Campout. See map in Newsletter.

Aug. 16th Yreka Melanie Jackson's (Changed to Wolff's in McCloud).

Sept. 13th McCloud at Jim Wolff's.

The meeting was adjourned at 8:50 PM.

Respectfully submitted, Melanie Jackson

SMOKEY THE BAT

Smokey the Bat, Smokey the Bat
Hiding in the daytime so you don't know where he's at
Catching fat mosquitoes is how he earns his fame
Few have seen a Pipistrelle and few can spell his name.

Smaller than an envelope and weighs about a gram
He's a friend to campers who are getting in a jam
So if you are out camping and mosquitoes give you hell
You'd never have to worry if you're near a Pipistrelle!

Smokey the Bat

His eyes are very clear when he is flying in the night
He only needs the stars to see a Miller Moth in flight
And if the night is cloudy and the moon and stars are gone
He finds the bugs with radar and his dinner time is on.

Smokey the Bat

In the sunny daylight he is hiding in a tree
Beneath the bark of snags or where no one else can see
So if you see a dead tree in the forest where you roam
You will not have mosquitoes with a Pipistrelle at home.

Smokey the Bat

Francis Mangels

REPRINT

REPRINT

REPRINT

REPRINT

Saturday, July 6, 1996 The Arizona Republic

Tiny Smokey the Bat bears witness to hazards of Arizona wildfires

By Steve Yozwiak
Staff writer

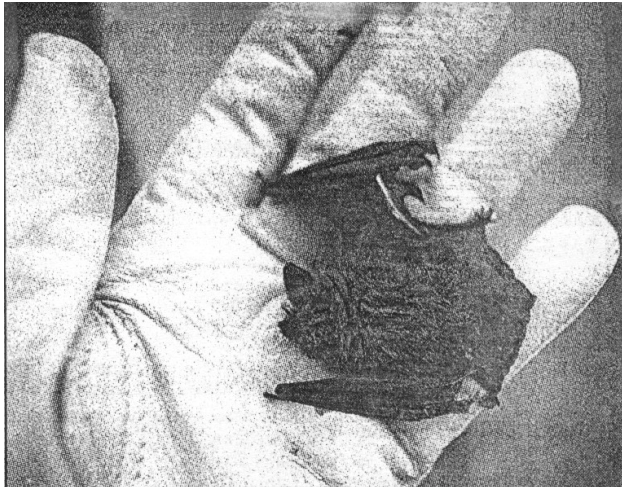
Two U.S. Forest Service workers surveying the aftermath of the Bridgers Knoll fire spotted something flapping in the ashes.

When they got closer, they realized it was a bat — a pipistrelle, the smallest species in

Arizona — whose tiny wings were singed by the inferno north of the Grand Canyon that was contained Monday.

Forest workers who are nursing the tiny adult male back to health have dubbed him Smokey the Bat,

— See **BURNED BAT**, page A23



U.S. Forest Service workers say they hope that the plight of Smokey, a full-grown pipistrelle bat resting in the hand of biologist Melissa Siders, will help people realize that Arizona's fire danger remains high.

Burned bat finds friend in U.S. Forest Service

— **BURNED BAT**, from page A1

wink to the Forest Service's Smokey Bear mascot.

Like Smokey Bear, a cub adopted after a fire in New Mexico's Lincoln National Forest in 1950, forest workers took the bat home to save its burns.

"We found the little guy struggling on the ground and decided we would capture it with a bandanna," said Sue Spear, a recreation specialist who was surveying scorched areas near Big Springs with Janet Travis, a soil analyst.

Because it was daylight, they knew the bat must be in trouble if it couldn't return to its roost.

They took the bat to Melissa Siders, a biologist for the North Kaibab Ranger District in Fredonia who is conducting a third summer of bat studies in conjunction with state and private agencies.

Because bats usually must fly to find water, Siders said, the damage to its wings also meant the bat was dehydrating.

She placed him in a small plastic enclosure with pieces of ponderosa pine bark, so the bat could hide.

At only 1½ inches long and with a wingspan of just 8 inches, the pipistrelle bat is among the smallest in the United States. Siders knows

Smokey is an adult, because a special wing joint appears to be fully formed.

Pipistrelles weigh less than a gram, she said, yet consume many times their weight each night in mosquitoes and other small flying insects, making them an important link in the forest ecosystem.

During his recovery, Smokey, who's also called Bridgers for the fire he survived, has received a steady diet of crickets.

He's up to more than a dozen a day, and Siders said she hopes to be able to release the bat in a few weeks.

Arizona has more than 20 bat species, Siders said, and most are found on the North Kaibab plateau, north of the Grand Canyon.

Forest Service workers say they hope Smokey's plight will help people realize that, even with some recent rains in Arizona's high country, fire danger remains high.

"Our forests are still extremely dry right now. It's going to take several storms to get us back to the point where there won't be a fire danger," Siders said.

Before the Smokey Bear promotional image was invented by the Forest Service in 1944, 10 million acres were burned annually in the United States by fires caused by human carelessness. With Smokey's help, that total in 1990 had dropped to less than 5.4 million acres.

CAVE NEWS

By B. Broeckel

BAT CAVE Cavers, bat biologists, and the Forest Service met on July 16, 1996 to hammer out some consensus on the issues surrounding Bat Cave, the bats, and Forest recreation. Watch for a gate to be installed some distance from the roadside entrance, with greater recreational intensity at Jot Dean and Roadside Complex Caves. With the National Cave Nomination process becoming an increasingly local phenomenon, we would do well to learn more about being advocates for our local caves. Cavers present at the meeting included B. Broeckel, Ray Miller (as Biologist), Dave Pryor, Denise Willey, and Jim Wolff.

BARNUM CAVE Liz Wolff was able to lead a YMCA trip to Barnum Cave. This cave offers a great opportunity for show and tell, and cave conservation topics seem to naturally present themselves along the way.

LOST SWALLET CAVE This KMCTF cave was surveyed to 298 feet, with the survey ending at a 16 foot pit. A second trip to the cave over July 4th speleocamp netted an additional 283 feet. The passage seemed to be heading towards Little Neff's Cave, but ended in a dirt fill. Total survey distance now stands at 581 feet.

SCORPION CAVE July 20, 1996. Major headway was achieved on the photo-monitoring project in Scorpion Cave. Many of the sites have now been identified, and attempts were made to re-photograph them. The next step will be to mark the stations in some way that won't damage the high beauty values of this protected cave. Ron Osbourne is leading this project on behalf of Southern Oregon Grotto and the NSS.

WINDY CAVE The "Windy Cave" of Josephine County, OR, was surveyed to a length of 88.8 feet on July 21, 1996. See article in this issue.

LAVA BEDS The Monument has released the final version of its General Management Plan. In response to comments, "a cave management specialist position has been included in the staffing plan of the proposed general management plan."

For Immediate Release
August 5, 1996

Craig Dorman
916-667-2282

Public Meeting for Lava Beds National Monument
General Management Plan

Superintendent Craig Dorman announced today that another public meeting will be held to discuss the final general management plan and environmental impact statement for Lava Beds National Monument. The plan includes measures to protect the area's resources and provide for public use over the next fifteen years. The final plan reflects public input from all previous meetings. Written comments on the document may be sent to the superintendent, but must be postmarked no later than September 6.

If no significant issues are raised, the plan will be approved and steps taken to begin implementation.

If you missed the last meeting, this final meeting is scheduled for Thursday, August 15th, at the Tulalake-Butte valley Fairgrounds from 7-10 p.m. Copies of the plan may be obtained by writing to Lava Beds National Monument, Post Office Box 867, Tulalake, California, 96134, or by calling (916) 667-2282.

REPRINT

REPRINT

REPRINT

REPRINT

Ride-along to the Lava beds

LAVA BEDS NATIONAL FOREST — Supt. Craig Dorman announced today that the monument is starting a new "Ranger Ride-Along" program beginning July 1.

The program will allow interested persons to schedule a four hour ride—along with monument rangers each week through September 1st. Dorman states the program is an outgrowth of public meetings and concerns from the staff

that the general public may not be-fully aware of the diverse tasks the park ranger performs.

It is hoped that the program will further enhance relationships between the monument and the visiting public, as well as provide an opportunity for the staff and interested persons to exchange ideas and concerns.

Reservations for the Ride-Along program may be sched-

SISKIYOU DAILY NEWS 5/96

uled through the Visitor Center effective immediately. Due to the monument's staff, only one ride-along will be conducted each week and limited to a maximum of two persons per trip.

Participants will have an opportunity to be involved with the Structural Fire, Search and Rescue, Emergency Medical Services, as well as Patrol aspects of the monument's field rangers.

Lava Beds announces start of summer programs

LAVA BEDS NATIONAL MONUMENT — Superintendent Craig Dorman recently announced the beginning of summer interpretive programs at Lava Beds National Monument. Each of the following activities is offered daily:

■ 9 a.m. Morning Walk

Guided walks will take you into the secret nooks and crannies of Lava Beds. We may investigate the plumbing systems of the Medicine Lake volcano, examine the delicate ecological adaptations of plants on a cinder cone, observe the dramatic recovery of plants after a fire, or trace the wearied footsteps of those

who fought on the battlefields of the Modoc War. Meet on the visitor center porch. Wear sturdy walking shoes, carry water, and wear a hat.

■ 2 p.m. Cave Trip

Guided cave trips provide an opportunity for you to do something you might other-

wise never attempt to do. We'll point out unique formations and talk about how they were made. Meet on the visitor center porch and we'll carpool to the cave entrance. Wear some kind of hat! Bring a jacket and wear long pants, as the caves are cold. Sturdy shoes or hiking boots are recommended.

SISKIYOU DAILY NEWS 6/96

■ 9 p.m. Evening Campfire

We know it's late, after a day of caving, but for most of the summer it isn't dark enough to show slides until 9 or 9:30. Evening campfire programs will cover various aspects of the monument in more detail than is possible at the information desk. Subjects include (but are not limited to) geology, Modoc War, ecology, seasonal variations, caving, history, culture, and management.

For more information call the monument at 916-667-2282.

WINDY CAVE by B. Broeckel

This Windy Cave is located in Josephine County, OR, on National Forest land. Surface erosion along the side of a limestone contact exposes three phreatic tube entrances. The two on the right quickly join to form a short loop. This "Not So Windy Cave" is favored by small rodents.

The remaining phreatic tube on the left is the entrance to Windy Cave. Several small rooms are connected by short crawlways. Airflow out of the cave originates low in the complex spongework area. Speleothem formation is limited to coral and popcorn on most of the cave walls. Some slightly thicker deposits are found in the high end of the cave.

Southern Oregon Grotto happened upon this cave while karst walking in October, 1991. At that time, SOG was called Jefferson State Grotto, and Marc Sorensen was the Grotto Chairman. Present on the karst walk were Matt Chastain, Bob Harvey, Ryan Johnson, Bill & Joel Kenney, Marc Sorensen, and Dan Weber.

Inside, there were some names and dates scratched on the cave walls. The oldest date was 1941. Also, a make-shift cave register was found, written on a paper towel and kept in a mayo jar with a bottle-cap and a coin. The register was placed by the "William's Cavemen" and included the following entries: Don Gibson, 10-1-85, 10-20-90, Frank Wright (Elijah Davidson's grandson), Scott Gibson (son), Kevin Coats, 10-1-85, and Ty Sullivan, 10-20-90. Elijah Davidson is credited with the modern discovery of Oregon Caves.

This was a good day and a good find for Jefferson State Grotto. They signed the cave register and resolved to find more cave passage later on. This outing has not been previously reported in print, but the details

were provided by Bill Kenney and his personal cave records.

"Later -on" turned out to be a warm day on July 21, 1996. Bill Kenney led SOG on the tough bush-whack to Windy Cave. Tom Kline, visiting from the Willamette Valley Grotto, strengthened the party, and we were able to patch together a survey team. The survey itself was started at the edge of a fire-ring located directly in front of the entrance. Cold air could be felt rushing out of the cave. Inside, the mayo jar was gone, but a short-handled hoe was found. Bill Kenney felt that somebody had been digging around in the cave. Down in the spongework area, the airflow was detected coming out of some marginal size holes. The largest passage, however, went up and seemed to end in a small chimney dome. The tape crew scouts thought that the passage going toward the left from the top of the dome looked a bit small. Meanwhile, Tom Kline was busy working on the book. After a little while, Tom climbed up the dome to take a look at the passage. Gradually, more and more of Tom disappeared until even his boots were gone, and he was able to pop through into a small turn-around room. This move added an extra survey shot to the end of the hanging survey.

Back outside, we ran more survey down the slope along the base of the cliff, and then through the other cave. This one was shorter, warmer, had less air flow, and was not as dark as Windy Cave. "Not So Windy Cave" we decided.

Legend has it that when a big fire burned at Oregon Caves, smoke poured out of some of these other little limestone caves. Obviously, all of these Southern Oregon caves are inter-connected by a deep mass of cavern-filled limestone that underlies every mountain, river, and valley in the entire region....

1996 WESTERN REGIONAL SEPT. 20-22

Berkeley Tuolumne Camp

This Western Regional, hosted by the Mother Lode Grotto, will be a Speleo-ed seminar. We have planned a wide variety of presentations and activities for your edification and education. Located in the heart of the Sierra Nevada, Berkeley Tuolumne Camp is only 45 minutes from world-famous Yosemite Valley. Cavers and guests at the regional will stay in rustic and cozy tent cabins with beds, dressers, hot showers, and a view of the surrounding Stanislaus National Forest. Some tents overlook the South Fork of the Tuolumne River, and fishing and swimming are always popular activities. Please help support your Western Region by including the 1996 Speleo-ed Regional in your fall activity plans!



What to Bring: All you will need to survive is bedding (or sleeping bags), pillow, towel, flashlight, bug repellent, and toiletries. Depending on registration numbers, groups of cavers may be asked to double up with other groups to maximize cabin space. Cabin capacity ranges from 2 to 8 cavers. Other equipment you may wish to consider might include fishing gear, swim suits, hiking boots, day packs, and cameras. Several hiking trails are within a short distance of camp. Open vertical practice is also planned during the regional. If you wish to participate, please bring appropriate gear. The last thing we'd like to mention is the one thing you should not forget: lots of money & items for the annual CALIFORNIA CAVER auction.

How to get there: Berkeley Tuolumne Camp is located just off Hwy 120 approximately 7 miles west of the entrance to Yosemite National Park. East of Groveland turn right on Hardin Flat Road. You will pass Yosemite Lakes resort area before arriving at the camp entrance. White road signs with arrows showing our bat silhouette will be placed along the highway during the regional weekend.

Following is a tentative schedule of events for the 1996 Regional gathering. Most of our activities will focus on a Speleo-education theme. Discussions and presentations on a variety of topics are planned for Saturday. On Sunday we will host a Speleo-olympics competition as well as the Western Regional business meeting and the Western Region Rescue Training Committee meeting. Please note that this schedule is subject to change.

Friday, Sep. 20: Arrivals, Registration, and Howdy Party.

Saturday, Sep. 21: Breakfast, programs, lunch, programs, dinner, Keynote presentation, Auction, Musical extravaganza, late night schnapps & sump diving.

Sunday, Sep. 22: Breakfast, Business meeting, Speleo-olympics, Rescue meeting.

Topics of programs include: Establishing a California Cave Conservancy, Self Rescue training modules, Cave restoration, Researching property ownership of caves, Cave photography, Newsletter publication, New technologies in caving, Basic cave geology, Project cavings in California, Cave exhibit preparation, Flying fur-balls: An insight on bats, and the special Keynote presentation by Bruce Rogers, world renowned earth scientist...on a good day.

Mail this form & check to Western Region Registration, c/o Don Dunn, 6337 Dorchester Ct., Carmichael, CA 95608. See the reverse side for options and prices.

Name(s): _____ Phone: _____
Address: _____ Grotto: _____
Vegetarian meals? Emergency contact/phone: _____

REGISTRATION FORM

(Please circle your choices)	Adult	10 - 14	7 - 9	3 - 6	0 - 2
Full Package (Fri & Sat Lodging, Sat. breakfast, lunch & dinner, Sun breakfast)	\$50	\$40	\$34	\$25	Free
After September 1 st	\$55	\$45	\$39	\$30	\$5
Saturday Only (Lunch, dinner & lodging)	\$30	\$20	\$16	\$10	Free
After September 1 st	\$35	\$25	\$21	\$15	\$5
Friday Dinner (optional)	\$7.50	\$6.00	\$4.00	\$2.00	Free
Sunday Box Lunch (optional)	\$5.00	\$4.00	\$3.00	\$2.00	Free
TOTAL					

'96 Regional T-Shirts		\$12 each
Size	Quantity	
Small		
Medium		
Large		
X - Large		
XX - Large		
Total		

Total Registration Fees: _____

Total T -Shirt Fees: _____

GRAND TOTAL: _____

******* Please make all checks payable to the Mother Lode Grotto *******

1996 NORTHWEST CAVING ASSOCIATION ANNUAL REGIONAL MEETING

Labor Day, August 31, September 1, 2, 1996
to be held near Ely, Nevada

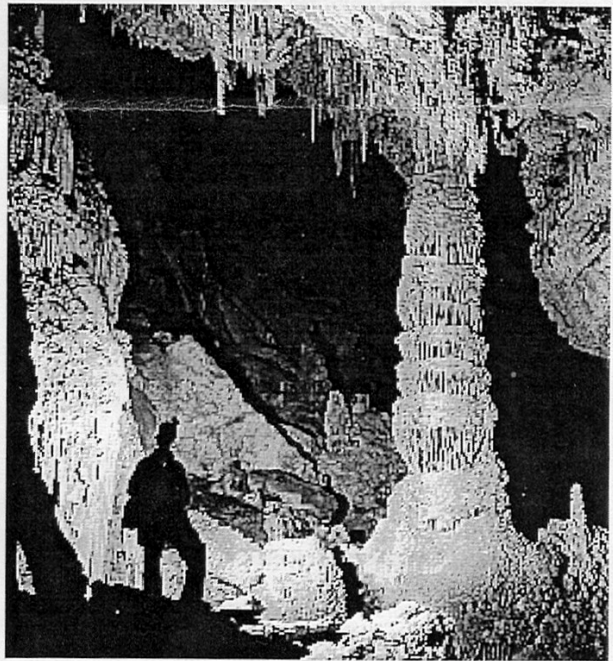
Sponsored by the Utah Grottos and featuring:

THE GREAT CAVES OF NEVADA

Whipple, Leviathan, Cave Valley, Lehman, Baker Creek System, Model, Goshute, Snake Creek, and many other caves are often referred to as "The Great Caves of Nevada." Centered around the old mining town of Ely, the caves are prime destinations for knowing cavers all over the west. While you can't see all the caves in one 3-day holiday, this Regional will be a perfect time to get introduced to the sights and wonders of this great caving area.

We plan on having several guided trips each day but the guidebook will be detailed enough to allow do-it-yourself excursions. Each guided tour will attempt to do at least 2 major caves each day. Some typical combinations are: Whipple & Cave Valley Caves, Snake Creek & Indian Burial Caves, Goshute & Pescio Caves, Crystal Ball & Old Mans Caves. If you have never seen Lehman Cave at Great Basin Nat'l Park, you should definitely plan a visit. Lehman is our most profusely decorated cave.

The campground is situated about 8 miles southwest of Ely and is situated in a typical 'pygmy' forest of pinyon pines and juniper trees. This is an undeveloped camping area with no water. We are working with the Forest Service and BLM to provide water tanks but they may not be suitable for drinking. Please bring your own containers for drinking water.
(Over)



The Column in Whipple Cave

REGISTRATION FOR 1996 NCA REGIONAL AT ELY, NEVADA

Name(s): _____	Fees:	No.	Total
Address: _____	Registrations @\$3.00 (17 & under no charge)	_____	_____
_____	Adult Dinners @\$7.00	_____	_____
Grotto Affiliation: _____	Kids Dinners @\$4.00	_____	_____
Do you need space for a large RV? _____ Size: _____	Guidebooks @\$6.00 (Available to participants only)	_____	_____
Make checks payable to: Salt Lake Grotto	T-Shirts @\$10.00	_____	_____
Send them to: NCA Regional	TOTAL	_____	_____
c/o Al Vester	T-Shirt Sizes: Sm _____ Med _____ Lrg _____		
4735 Pepper Tree Court	Xtr Lrg _____		
West Valley City, UT 84120			

The camp can accommodate most vehicles and trailers. However, the number of spaces are limited for really big units, like large Winnebagos. We must reserve an area if you intend to bring this type of vehicle so others will not camp there. A space is provided on the form to let us know if you need a large area to park.

The campground is at 6,800 feet elevation. On Labor Day, you should expect nice daytime weather and chilly nights. While not anticipated, you should be prepared in case the temperature briefly drops below freezing at night.

CAMPFIRES?: We don't know for sure yet. The area has been unusually dry but that could change. While the BLM or Forest Service haven't issued fire restrictions as yet, you shouldn't plan on campfires. Sorry.

TOILETS?: The usual port-a-potties will be rented, one of the extra charges needed in the registration fee.

SPECIAL EQUIPMENT: Two caves require vertical gear: Whipple and Indian Burial Caves. Both are 60 foot drops. Elbow pads are recommended for the crawl in Snake Creek. A dust mask is also recommended for Snake Creek's entrance. There is something very special about Cave Valley Cave. It is filled with extremely sticky, wet, slimy clay. This clay defies easy removal. Anyone who does any caving there makes it the last cave of their excursion or brings along extra boots, coveralls, gloves, etc., to wear to other caves. You can't clean the clay off without a lot of water! Bring about 6 plastic grocery bags to stow your gear in until you get home. Don't put any gear you used in this cave directly in your vehicle without some protection. Don't let all this discourage you from seeing Cave Valley Cave. It is a great experience, but you will enjoy it more if you are prepared.

On the non-caving side: Distances are far out here, gas stations are infrequent. Carry an extra gallon or two of gas in a can. While YOU may never run out of gas, you may need some for your caving buddies.

HAM RADIO: The repeater on 147.180 MHZ, no tone, + offset, seems to work best at the campsite. Simplex frequencies don't work well around here unless you are in the same valley. CB is next to worthless because of the mountains. There are no definite plans to monitor the repeater at the campground but you can try to see if anyone's listening. For starters call KC7AOZ, handle "Dale."

DINNER: Hal Smith is preparing a delicious Dutch

Oven dinner of barbeque pork ribs and vegetarian spaghetti for Sunday evening at the very nominal price of \$7.00 adults, \$4.00 children 17 & under.

GUIDEBOOK: Maps of Regional Meeting caves, along with several others, will be included in the guidebook. Directions to many caves will be given but don't get too upset with this. They are already shown on the USGS topo maps. If you have a guidebook from the 1990 Regional, held in the same general area, it will probably suffice. However, there are newer, more complete maps of many of the caves which will be presented in the new guide.

T-SHIRT: Something new will be offered to NCA Regional cavers - a T-shirt commemorating the event. They should be pre-ordered if you want to be guaranteed delivery. Otherwise they will be offered for sale at the registration desk in 3 sizes, Med, Lrg and Xtra Lrg. If anyone wants a Small size it must be pre-ordered.

RAFFLE: Yes, a raffle is in the planning stage. Tickets will be \$1.00 each.

HOW DO I GET THERE?

It is simple. Get a Nevada roadmap. The campground entrance is 2.5 miles south-southwest of Murry Summit ("Murray" on some maps) on US Highway 6 going west out of Ely. Turn south at a sign saying "Lion Spring, Upper Terrace, Lower Terrace." The gravel road forks immediately. Turn right up the small grade. Murry Summit is 6.3 miles west of the golden arches of McDonalds at the crossroads of US6, US50, and US93. All approaches to Ely have large signs telling you how to get to McDonalds.

If you are coming in from the west on US50 and don't need to go into Ely for gas, provisions, etc., there is a shortcut. Turn right towards Ruth at milemarker WP61.4. Go 1/2 mile west where the road forks. Turn left here (south). The road winds between mine pits, dumps, and buildings and after about 3 miles becomes an extremely well maintained gravel road about 50 feet wide. Keep going around a large switch back and soon there is pavement again. This road joins US6 0.2 miles east of Murry Summit.

The GPS coordinates of the turnoff are 671,490E, 4,339,850N, UTM 1928NAD, zone 11. Plug it in!

NEED MORE INFORMATION?

CONTACT: Hal Smith, 202 - 5th East, Copperton, UT 84406 (801) 565-0719

SAG RAG

524 Annie Street
Yreka CA 96097

STAMP

TABLE OF CONTENTS

Page 1	Cover: Windy Cave map
Page 2	Editorial and Calendar
Page 3	SAG meeting minutes: June
Page 4	Poem: Smokey the Bat
Page 5	News clippings: Smokey the Bat
Page 5	Cave News
Page 6	Lava Beds Management Plan
Page 7	News clippings: Lava Beds
Page 8	Windy Cave article
Page 8	Western Regional
Page 11	Northwestern Regional

TO:

Remove Staple For Inspection